

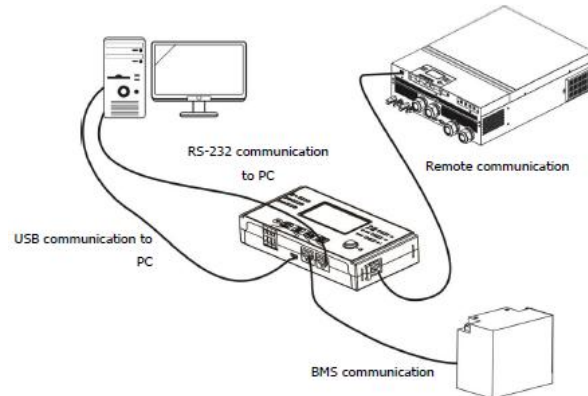
Output Voltage Calibration SOP

Prepare:

- Install COMMUNICATION TOOL in Windows

Calibrate the output voltage:

Step1. Connect the unit and the PC via RS-232 communication cable.

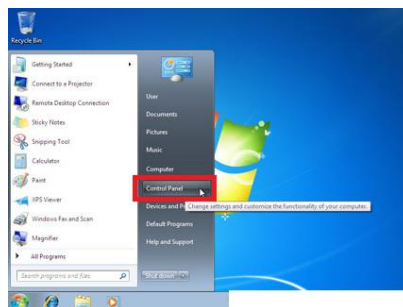


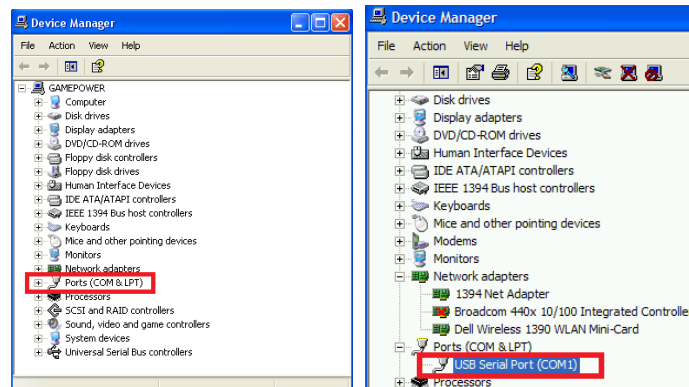
Step2. Once the unit has been properly installed and the batteries are connected well, simply press On/Off switch (located on the display panel) to turn on the unit. Make sure the LCD is lit normally.



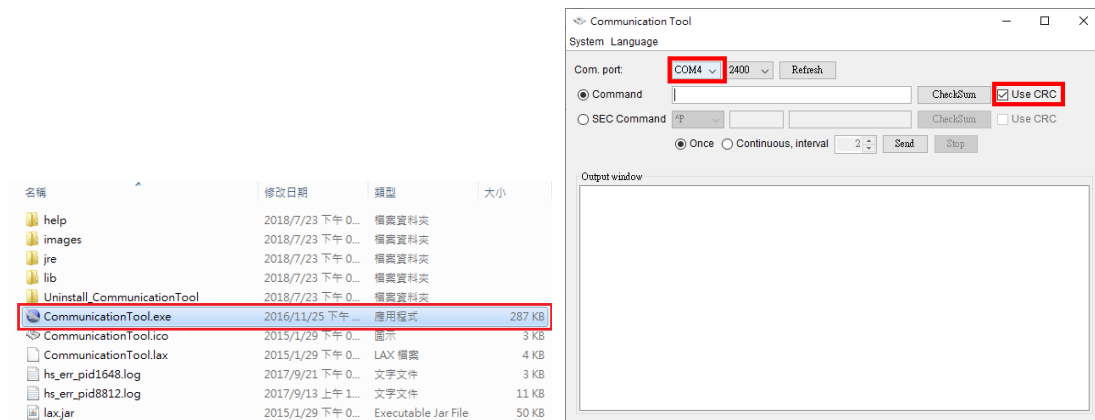
Step3. Please check the COM Port Number as below pictures. And make sure com port number lower than ten.

NOTE: Make sure all application communication software using this COM port is turned off, including some UPS monitoring software.

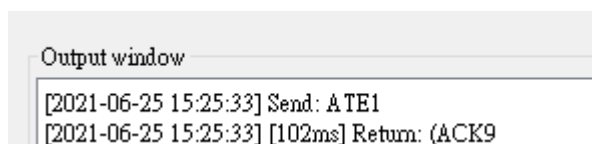




Step4. Double click "Communication Tool.exe". The window appears COM port and click "use CRC" as below picture.



Step5. Send command "ATE1" and the Inverter returns (ACK).



Step6. If output voltage is lower than 120V, send command "IVA-01" and the Inverter returns (ACK. Please repeat Step6 until output voltage is 120V.

Step7. If output voltage is higher than 120V, send command "IVA+01" and the Inverter returns

(ACK. Please repeat Step7 until output voltage is 120V.

Step8. If output voltage is 120V, send command "ATE0".